

DIRECTOR'S REPORT: 2021 STATE AGENCY CLIMATE CHANGE ADAPTATION FRAMEWORK



<https://www.oregon.gov/lcd/CL/Pages/Adaptation-Framework.aspx>

AN UPDATE TO THE 2010 FRAMEWORK

- 23 Agencies participating
- Officially released in January 2021

Update Goals

- Avoid creating a wish list by creating a Framework for incorporating climate adaptation in to the work of state government
- Balance state's emphasis on reducing Greenhouse Gas Emissions (GHGs)

The Oregon Climate Change Adaptation Framework

December 2010

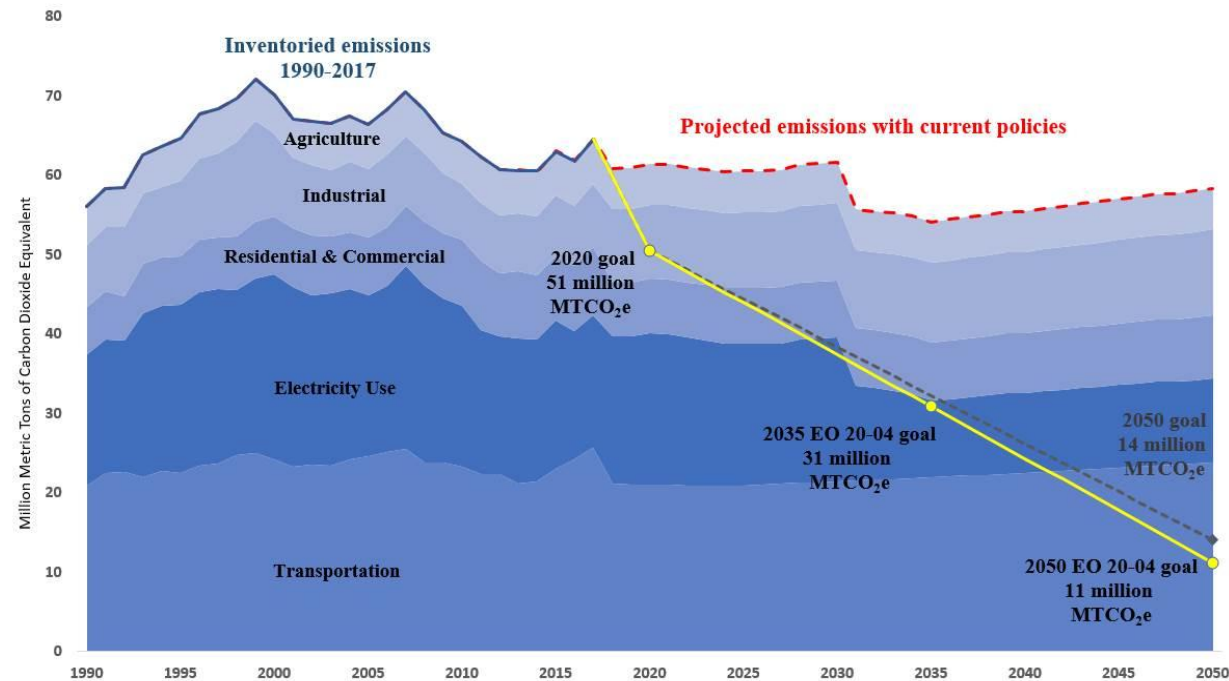


IMPORTANT DEFINITIONS

Mitigation - reducing the flow of heat-trapping GHGs into the atmosphere by reducing sources of these gases

Sequestration - enhancing the “sinks” that accumulate and store GHGs

Adaptation - long term, transformative, actions implemented to adjust to life in a changed climate

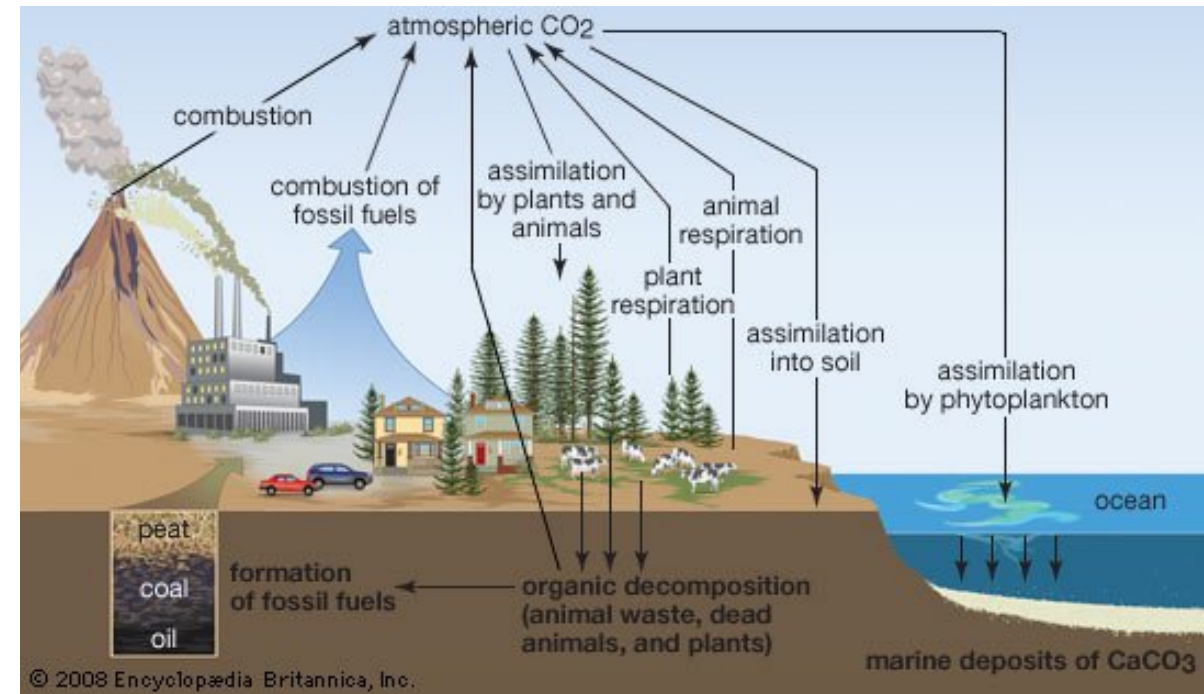


IMPORTANT DEFINITIONS

Mitigation - reducing the flow of heat-trapping GHGs into the atmosphere by reducing sources of these gases

Sequestration - enhancing the “sinks” that accumulate and store GHGs outside of the atmosphere

Adaptation - long term, transformative, actions implemented to adjust to life in a changed climate



IMPORTANT DEFINITIONS

Mitigation - reducing the flow of heat-trapping GHGs into the atmosphere by reducing sources of these gases

Sequestration - enhancing the “sinks” that accumulate and store GHGs

Adaptation - long term, transformative, actions implemented to adjust to life in a changed climate

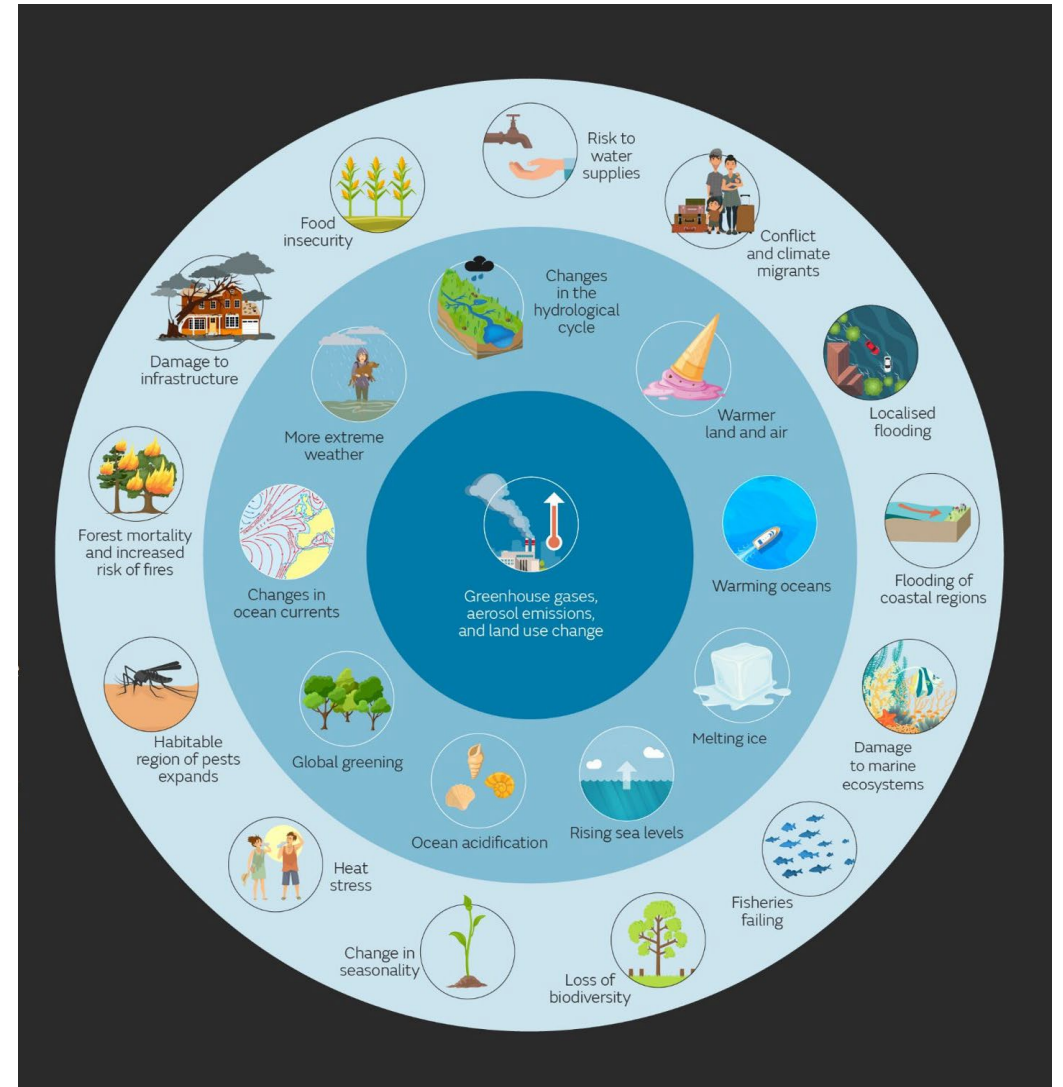
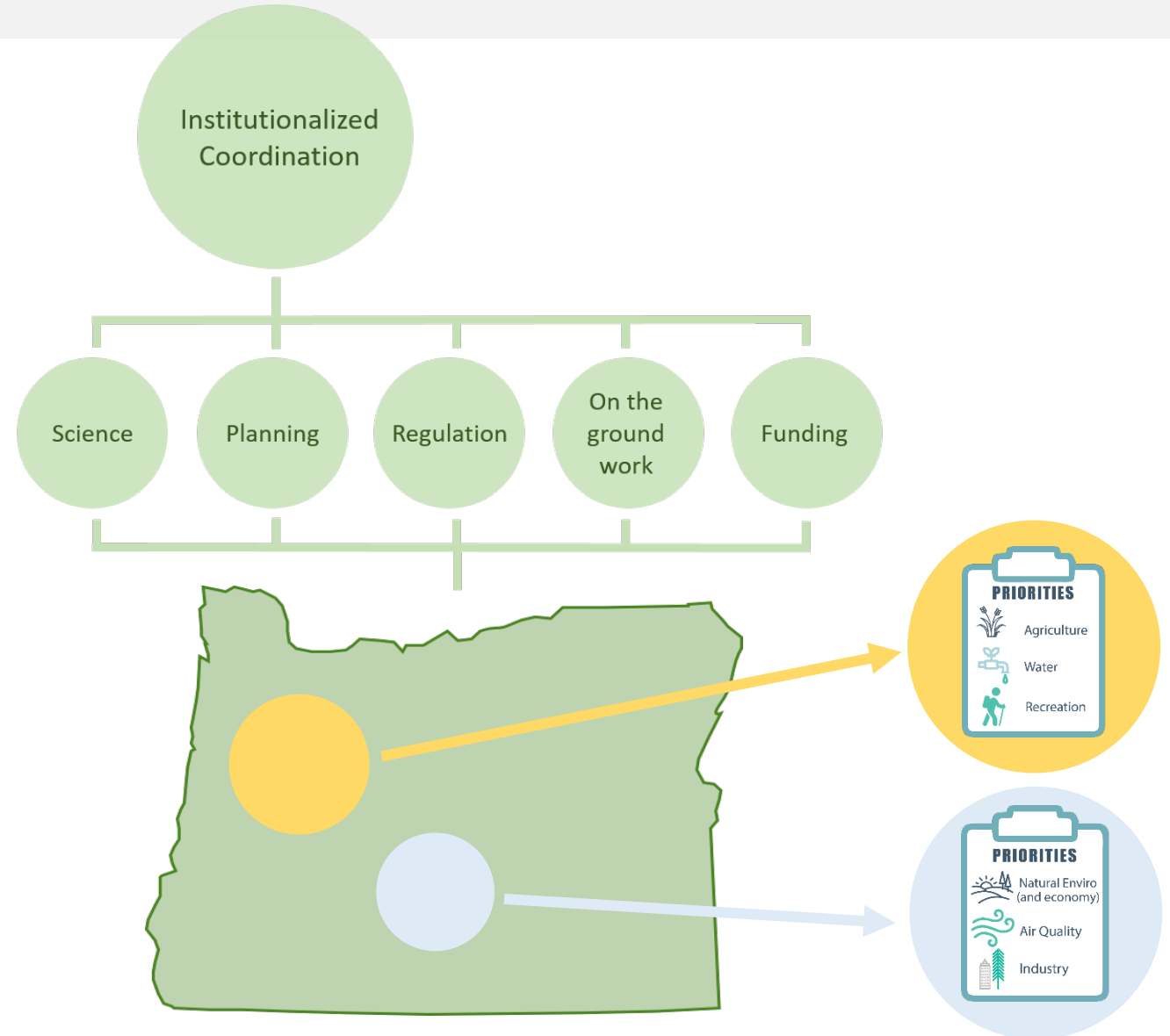


Image Source: UK Met Office

STATEWIDE COORDINATION

(FROM ODFW CLIMATE & OCEAN CHANGE POLICY)

- Coordinated inventories and vulnerability assessment
- Efficient research and monitoring
- Determine clear priorities within and across geographical areas
- Implement priorities
- Work with the public and landowners



THE FRAMEWORK – GUIDING PRINCIPLES

- Embrace flexibility, use adaptive management, and community driven scenario planning.
- Climate change is a “stress multiplier” that exacerbates existing political, economic, social, and environmental tensions throughout Oregon
- Climate change will not be borne equally by all people, state must tailor programs and investments to redress inequities.

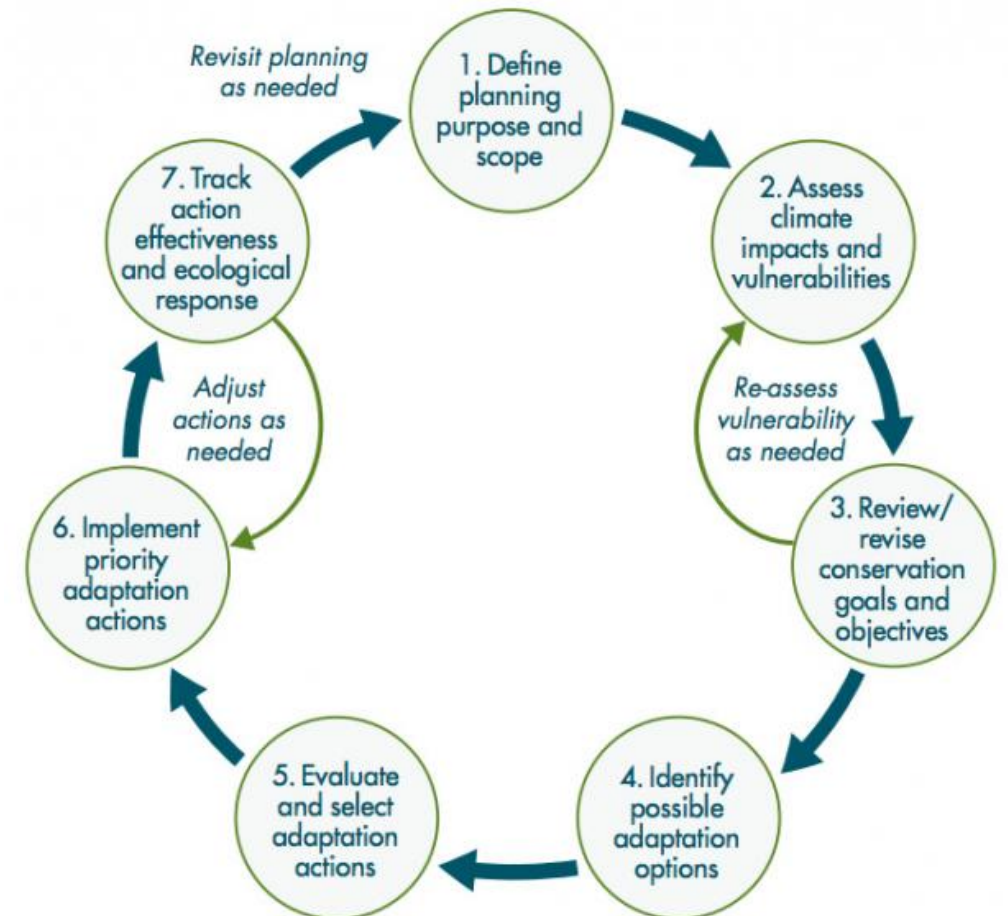
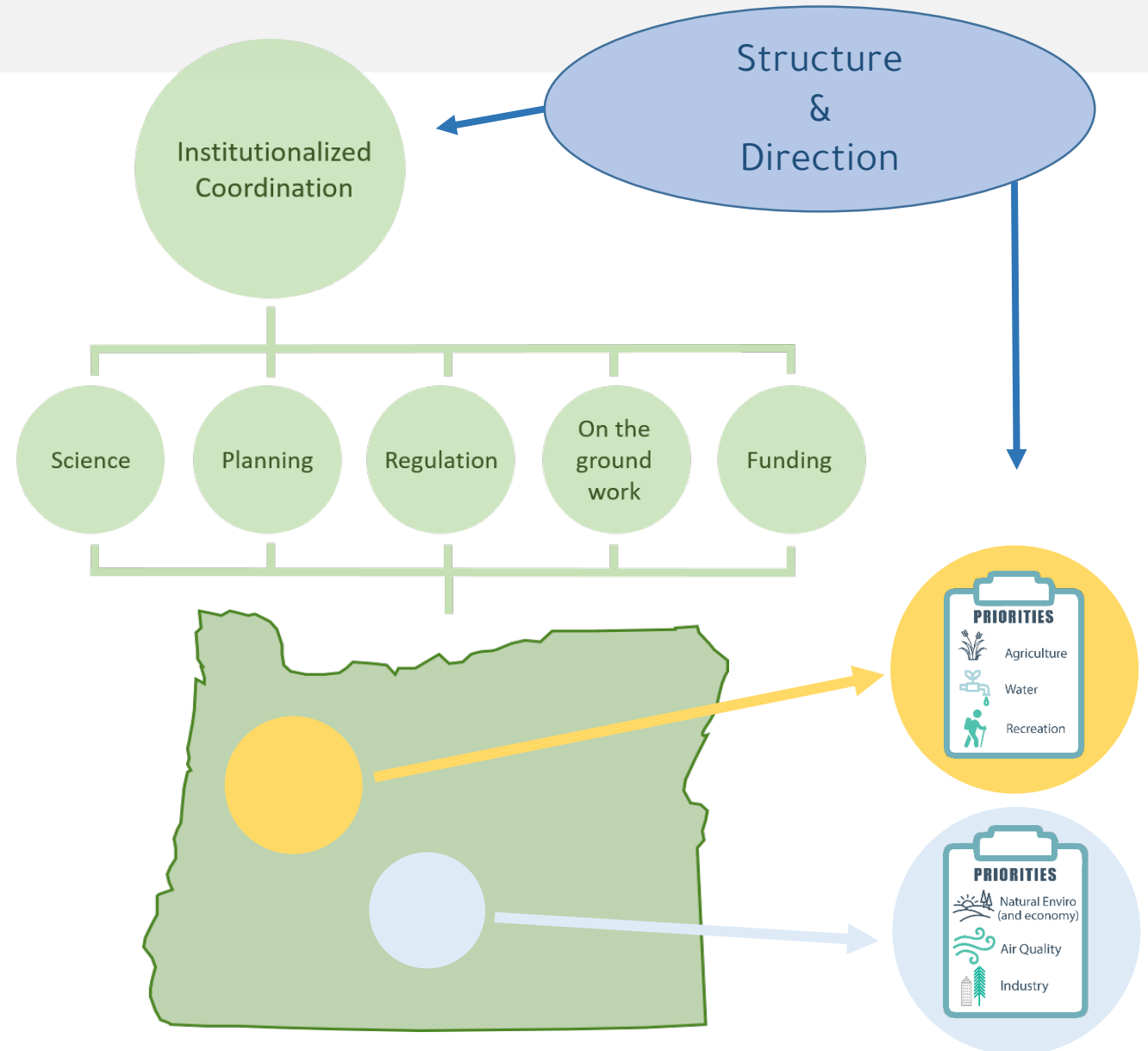


Image Source: *Climate-Smart Conservation: Putting Principles into Practice*

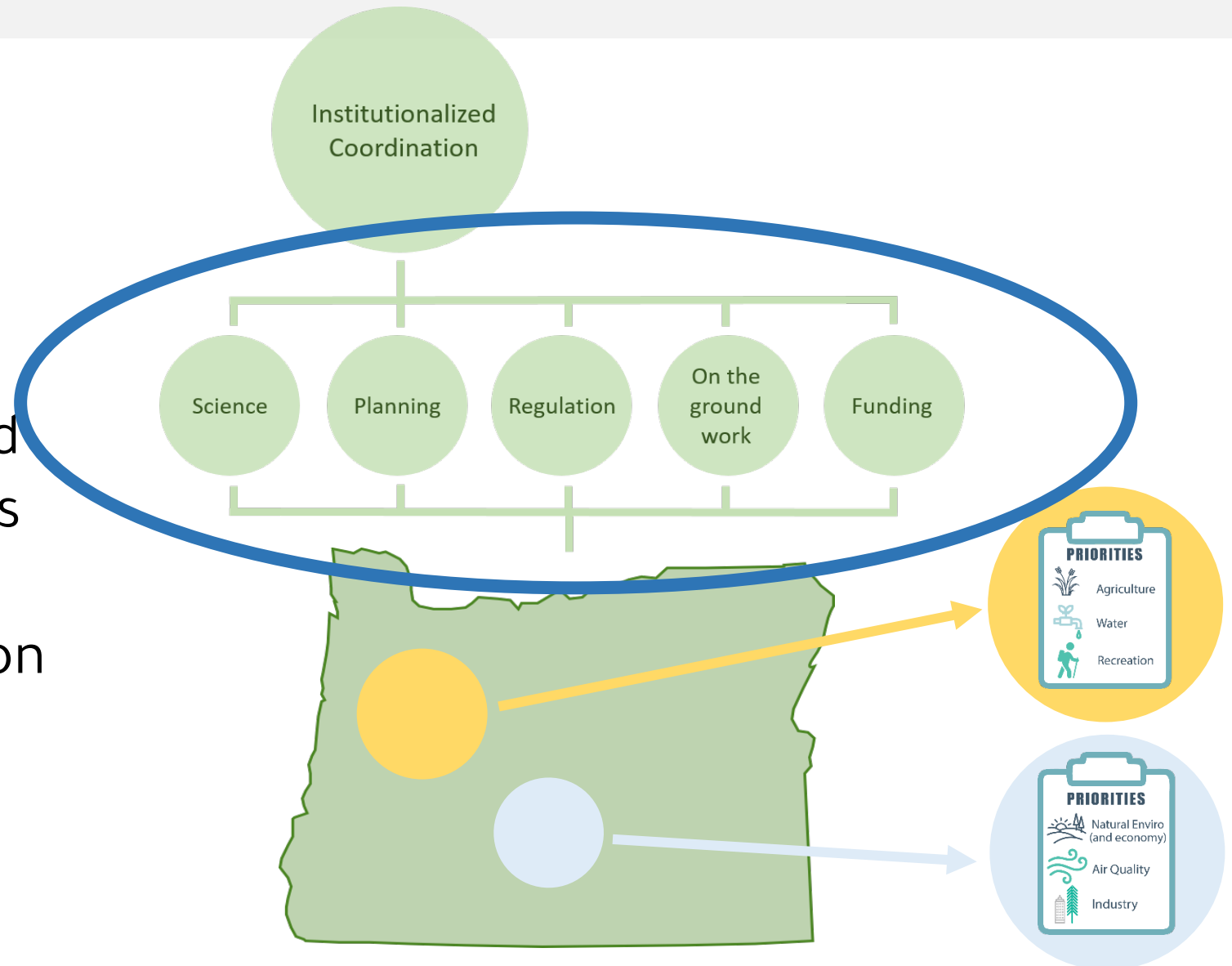
THE FRAMEWORK - LEADERSHIP

Establish a multi-agency leadership structure, ensure wide-ranging benefits, reduce conflicts, and achieve balance across the state's natural resources, economies, and communities.



THE FRAMEWORK - COORDINATION

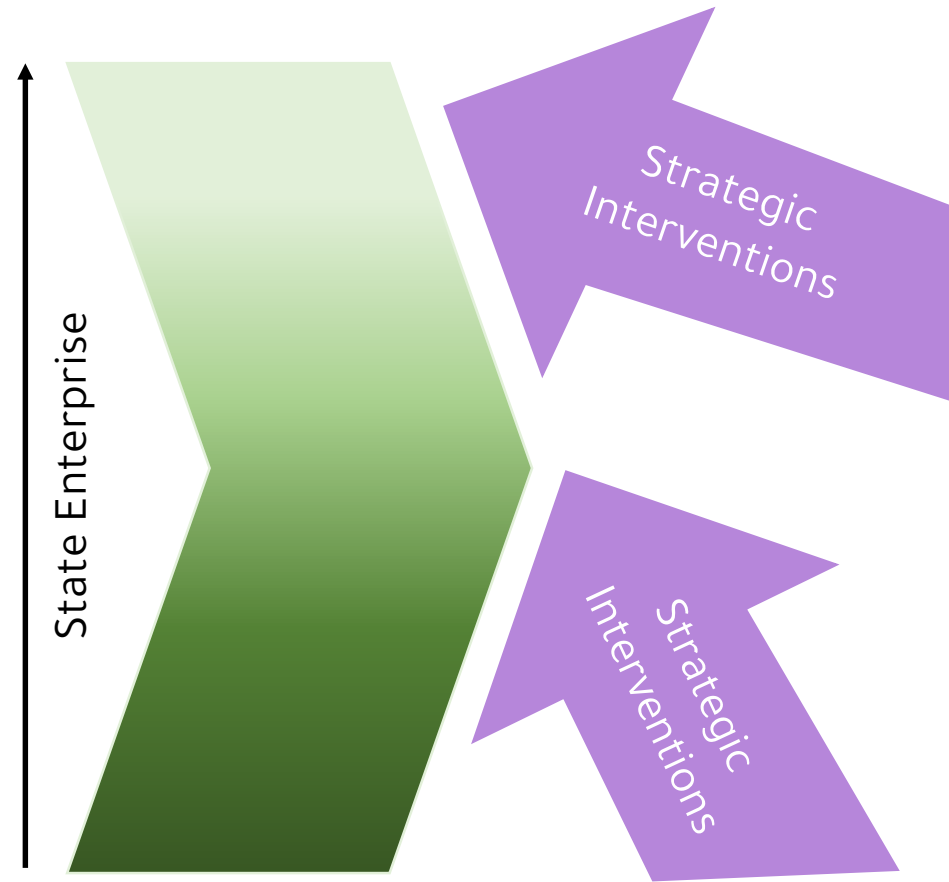
Improve interagency coordination and information sharing, by evaluating, prioritizing, and developing a range of tools to support effective interagency communication and collaboration.



THE FRAMEWORK - INTEGRATION

Integrate responses to climate change throughout agency operations, through fully incorporating actions into:

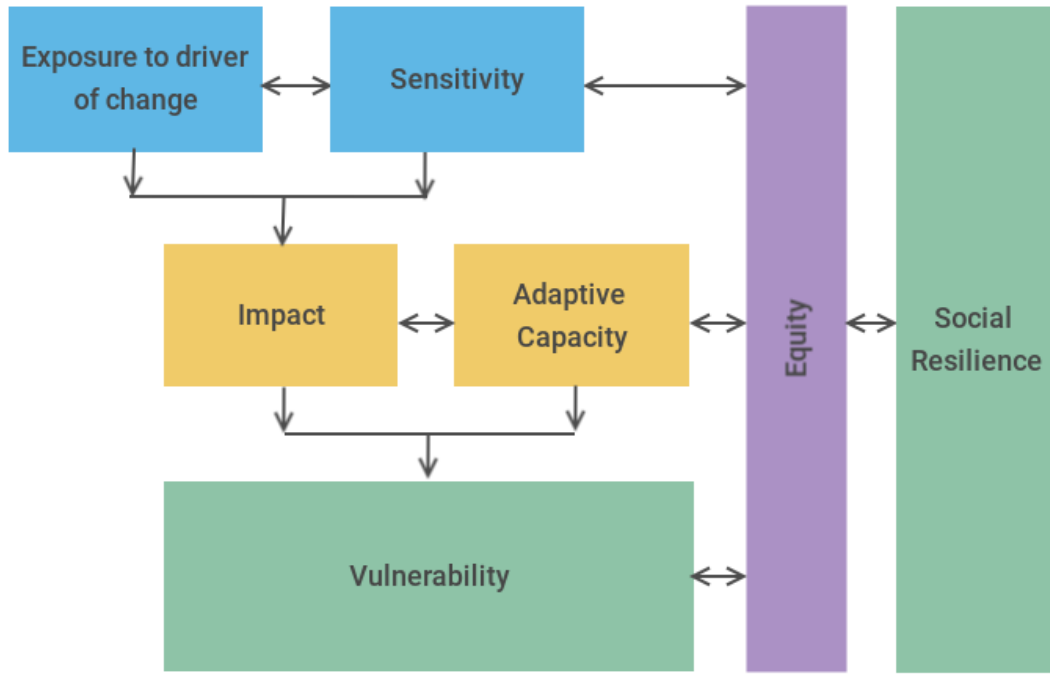
- Agency missions
- Authorities
- Programs
- Plans
- Budget requests





THE FRAMEWORK – ASSESS VULNERABILITY

Complete a comprehensive climate change vulnerability assessment, integrated across sectors and agencies, to identify key vulnerabilities, sources of resiliency, and opportunities for action.



THE FRAMEWORK - EQUITY

Ensure use of best practices in diversity, equity, and inclusion, when engaging communities to make certain that the state's future investments are targeted where they are needed most.





ADAPTATION GOALS

THEME	GOAL
ECONOMY	<i>Promote resilient, innovative, and inclusive Oregon economies that addresses climate change challenges and opportunities.</i>
NATURAL WORLD	<i>Support robust functioning of Oregon's terrestrial, aquatic, coastal, and marine ecosystems as the climate changes.</i>
BUILT ENVIRONMENT AND INFRASTRUCTURE	<i>Ensure Oregon buildings, utilities, and infrastructure are resilient to extreme weather and climate change.</i>
PUBLIC HEALTH	<i>Reduce climate-related health risks and promote Oregon community resilience, especially among people and communities who are disproportionately affected.</i>
CULTURAL HERITAGE	<i>Research, plan for, and adapt to the impacts of climate change on Oregon's cultural landscapes.</i>
SOCIAL RELATIONSHIPS AND SYSTEMS	<i>Create equitable, livable and engaged Oregon communities in response to the impacts of climate change.</i>

ADAPTATION STRATEGIES, NATURAL WORLD

- Enhance water security for both In-stream and consumptive uses
- Support functioning of terrestrial ecosystems
 - Ex. “Identify areas of high connectivity of land cover, species habitat, and potential climatic refuges...”
- Support ocean health and blue carbon ecosystems
- Manage wildfire risk
- Control invasive species



Image Source: *Oregon Water Vision*



WHAT'S NEXT?

- Establishment of Adaptation Leadership Structure
- DLCDC Policy Option Package 111:
 - Interagency coordination in to the 2021-2023 biennium
 - Comprehensive vulnerability assessment
- Integration in the 2023-2025 agency budgets
- Engagement beyond state government